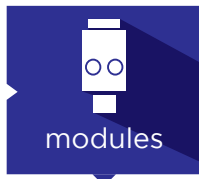
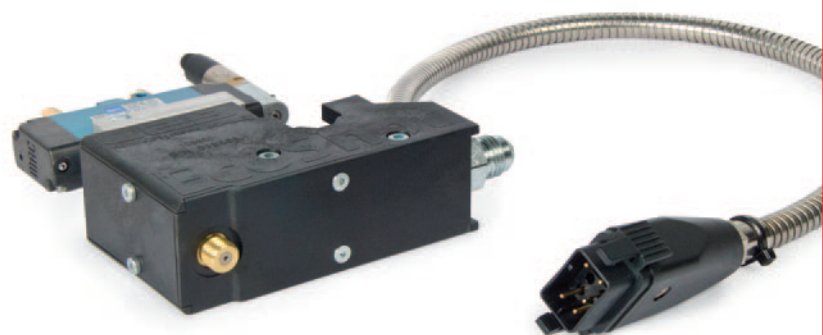
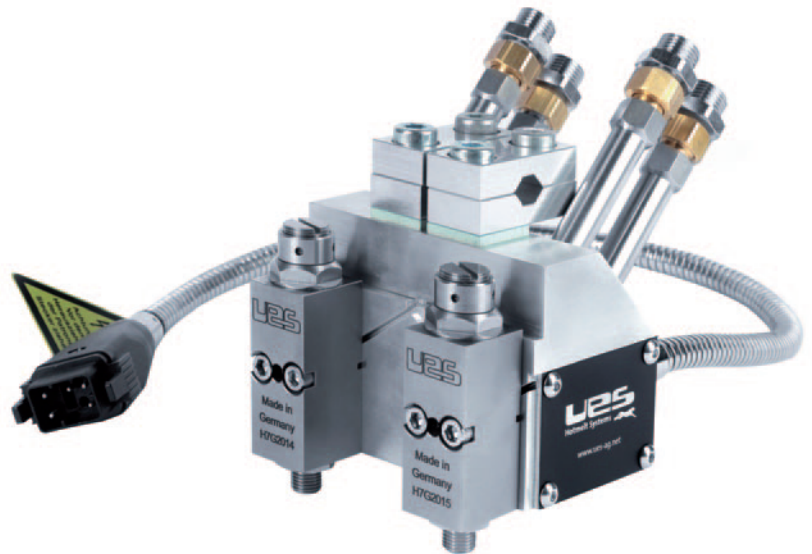
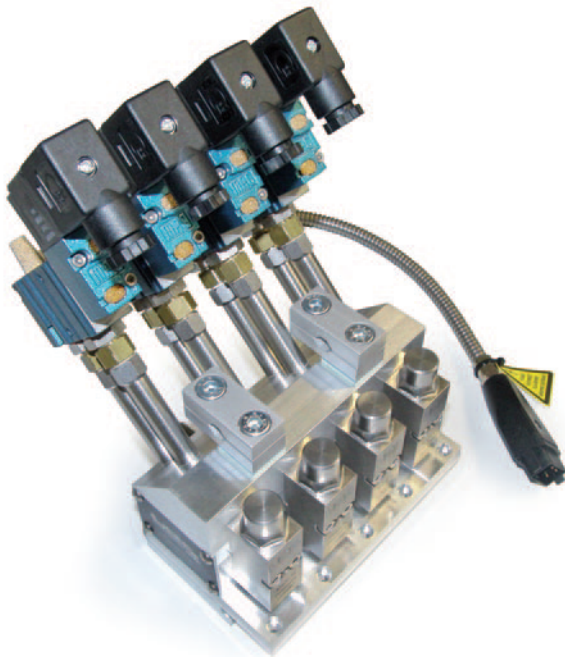




application  
heads



modules



UES also builds special application heads according to customer specifications!  
Please do not hesitate to contact us.

## EcoShot Dot/Bead

- energy saving of approx. 50 %
- touch protection: surface temperature reduced by more than 50 %
- size: 40 % smaller than comparable application heads
- easy change of module
- air opening / air closing
- speed: control from 3 ms
- up to 7500 cycles per minute (depending on adhesive and solenoid valve)
- incl. 5/2-ways solenoid valve
- protection class IP 54
- with UES Mini Module H3000 dot/bead
- improved thread break
- also available with needle seat module H3000 NA

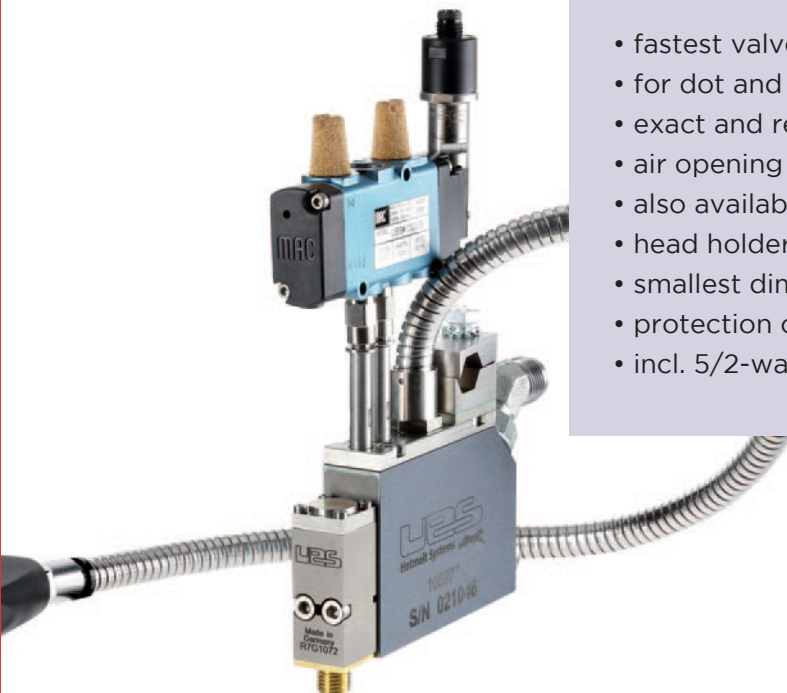


## H301 Dot/Bead

- single-module application head
- heating and sensor integrated
- air-opening, spring-closing
- smallest dimensions
- optionally with glue drain groove for "over-head" application
- protection class IP 54, optionally available as IP 65 version



## H3001 Rapid Dot/Bead



- fastest valve technology and improved thread break
- for dot and bead applications
- exact and repeatedly accurate application from 3 ms
- air opening / air closing
- also available with needle seat module H3000 NA
- head holder for quick mounting
- smallest dimensions
- protection class IP 54
- incl. 5/2-ways solenoid valve



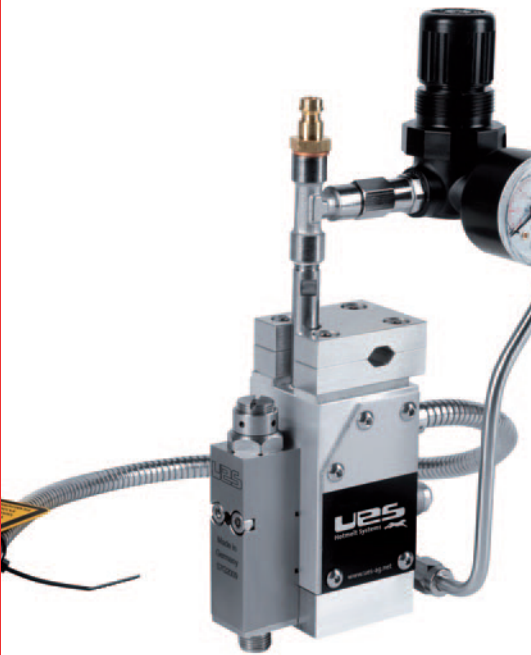
## H341 AOAC Dot/Bead



- air opening / air closing
- especially suitable for fast dot shot applications
- excellent thread break
- long service life and high repeat accuracy
- protection class IP 54, optionally available as IP 65 version



## H301 Spray Application Head



- air opening / spring closing
- available with one module or more (up to four modules)
- LP (low-profile) version available for small installation depths
- heater and sensor integrated in the head
- GL = Common control air (standard), EL = Single air (optional)
- stitch from 22 mm

## H301 Spray Application Head with Quick-Out



- quick-change system for sensors and heating
- air-opening / spring-closing
- flexible positioning of the electrical connection (Quick-Out)
- for applications with little space and high continuity
- for fast applications by design
- GL = common control air (standard) or EL = single air (optional)
- stitch from 22 mm
- protection class IP 54, optionally available as IP 65 version





modules

## Modules

UES modules for glue dosing are made of high-quality individual components. They are reliable, extremely robust and durable. Perfectly matched to UES application heads, best results and optimum thread break are achieved even with viscous glue types or PUR adhesives. The same exact application is also achieved in combination with application heads from other manufacturers.



H300PR



H300OLL



H340LL



H300SP



H300NA



tank



application  
heads



modules



nozzles



hand  
applicators



hoses



accessories

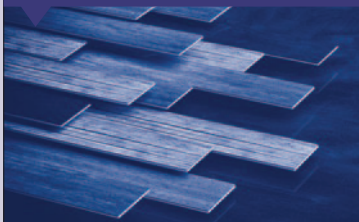
#### Packaging



#### Foundry Technology



#### Wood Processing



#### Manufacturing Systems



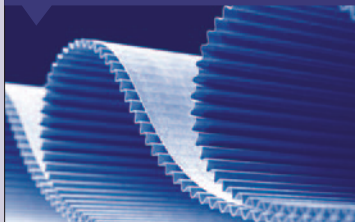
#### Furniture Industry



#### Automotive Industry



#### Paper Industry



For more  
information  
about us  
please visit  
our website

Your local UES Partner



UES AG  
Breuershofstraße 48  
D-47807 Krefeld  
Tel +49(0)2151.7295-0  
info@ues-ag.net  
www.ues-ag.net

Visit us on

